

**Utah Arts & Museums Public Art Program  
Requests Utah Artist's Qualifications  
for the  
Utah State University Kem and Carolyn Gardner  
Learning and Leadership Building**



Request for qualifications from artists and/or artist teams interested in creating site specific artwork(s) for the Gardner Learning and Leadership Building on the campus of Utah State University in Logan, Utah.

**DEADLINE FOR MATERIALS: February 16, 2024**

## THE UTAH STATE UNIVERSITY JON M. HUNTSMAN SCHOOL OF BUSINESS

The purpose of the Jon M. Huntsman School of Business is to be an engine of growth for the community, the state, the nation, and the world, and to be a career accelerator for our students. Their mission is to develop leaders of distinction in commerce and public affairs. This is built on four strategic pillars: Analytical Rigor, Entrepreneurial Spirit, Ethical Leadership, and Global Vision. The School's strategic objective is to become the premier, undergraduate business and economics program in the Intermountain West.

## KEM AND CAROLYN GARDNER LEARNING AND LEADERSHIP BUILDING

The Kem and Carolyn Gardner Learning and Leadership Building will fill a vital and honored place on the USU campus in Logan in connection with the Jon M. Huntsman Hall (primarily a classroom building) and the George S. Eccles Business Building (primarily an office building). The new building will house the co-curricular experiential learning and leadership activities of the Huntsman School of Business and will serve as a "Center of Centers." In addition, the building will feature state-of-the-art internship and common spaces and will be designed to meet the beautiful and exacting standards of Huntsman Hall and the George S. Eccles Business Building.

Students tend to experience the greatest growth when they have mentors who take a personal interest in them and lead them through meaningful out-of-class experiences. We are working to ensure that these experiences are tailored to the skills and interests of each student. To this end, the new building will house 6 centers that provide students with a wide range of experiences across multiple business disciplines:

- **Center for Growth and Opportunity:** Students learn all aspects of economic research, from data collection and statistical analysis to reading, writing, and public speaking.
- **Center for Entrepreneurship:** Students learn how to start and grow a business. They also learn how to lift others out of poverty through the hands-on application of business principles.
- **Stephen R. Covey Leadership Center:** Students learn to become principled leaders by studying and living the teachings of leading experts.
- **Analytics Solutions Center:** Students apply rigorous data analytics techniques to solve real-world problems.
- **She's Daring Mighty Things:** In this new initiative, students will enjoy space that is dedicated to advancing the success of women in business.
- **Institute for Interdisciplinary Study:** Students will be exposed to interdisciplinary research projects.

## COMMITTEE STATEMENT

The Art Selection Committee has selected an interior wall for the integration of public artwork. This 29-foot-long wall is located on the 2nd floor above the learning stair, an important gathering space connecting the first floor to the second. This space is a focal point landing at the top of the heart of the building, a large wood timber learning stair. It can be seen from the Main Level seating area and along the learning stair, as it is the main focal point as you climb the stair to Level 2. The Committee is seeking an artwork that will highlight the space and guide the viewer's eye up.



## BUDGET

**\$85,000** is available for all related expenses of this Public Art commission including (but not limited to) artist fees, fabrication, support structures, insurance, shipping, travel, lighting, installation, documentation, etc.

## ELIGIBILITY

This project is open to artists/artist teams residing in the Intermountain West to include: Utah, Arizona, Colorado, Idaho, Montana, Nevada, New Mexico, and Wyoming. Utah artists will be given additional weight in the selection process. Applicants must have a U.S. Tax ID Number (SSN, EIN, ITIN, or other). Art Selection Committee members and staff of Utah Arts & Museums and MHTN Architects are not eligible to apply for this commission. All Art Selection Committee members will declare any conflict of interest and recuse themselves from the vote when reviewing artist applications.

## SUBMISSION INSTRUCTIONS

Interested artists may submit applications online via [CallForEntry.org](https://CallForEntry.org).

Register at [www.callforentry.org](https://www.callforentry.org) and follow the directions for registration and submitting material for this Public Art Request for Qualifications. The application process will prompt you for all necessary documents and information. This includes up to 10 images and/or up to 2 movie files of previous work, a CV or resume, and a Statement of Interest explaining your interest in the project and how your work might relate to the project.

To request an accommodation for a disability, please complete an Accommodation Form at least two weeks in advance of the February 16 deadline. Accommodation forms can be found at [artsandmuseums.utah.gov/accessibility](https://artsandmuseums.utah.gov/accessibility)

Utah Arts & Museums will not be responsible for applications delayed or lost in transit. While all reasonable care will be taken, neither the Utah Division of Arts & Museums nor the USU Gardner Building Art Selection Committee will be liable for late, lost, or damaged materials or electronic files. Faxed or emailed applications cannot be accepted.

## DEADLINE

**Complete application packages must be RECEIVED by  
February 16, 2024 by 11:59p.m. MT**

## SELECTION PROCESS AND SCHEDULE

The Selection Committee will review all properly submitted qualifications from which a short list of semi-finalists will be selected. Semi-finalists will be asked to present a full proposal to the committee in May 2024 to include concept, budget, and timeline. All semi-finalists will be awarded an honorarium to help defray the costs of the development of the proposal. The honorarium will be applied toward the commission amount for the artist(s) awarded the commission(s.) Utah Arts & Museums will not be responsible for applications delayed or lost.

The USU Gardner Building Art Selection Committee reserves the right to withhold the award of a commission or re-release the call for entries.

### **Schedule:**

**February 16, 2024, 11:59pm MDT**

Deadline for receipt of preliminary materials

**February 27, 2024**

Committee Review and Finalist artist notification

**May 7, 2024**

Finalists interviews and presentations

**March 2025**

Artwork complete

**April 2025**

Project substantial completion



### **ARTIST SELECTION COMMITTEE**

Frank Caliendo

Senior Associate Dean, Jon M. Huntsman School of Business, USU

Lucas Davis

Project Manager, Division of Facilities Construction & Management

Naarah Kristensen

Project Manager, MHTN Architects

Dave Patel

Associate Dean for Student & External Affairs, Jon M. Huntsman School of Business, USU

Lianne Wappett

Huntsman Scholar Academic Director, Jon M. Huntsman School of Business, USU

Lorin Wilcox

Senior Project Coordinator, Facilities Planning, Design, and Construction, USU

If you have any questions about this or other projects information is available at: [Publicart.utah.gov](http://Publicart.utah.gov)  
Or contact: Hannah Barrett at [hbarrett@utah.gov](mailto:hbarrett@utah.gov).

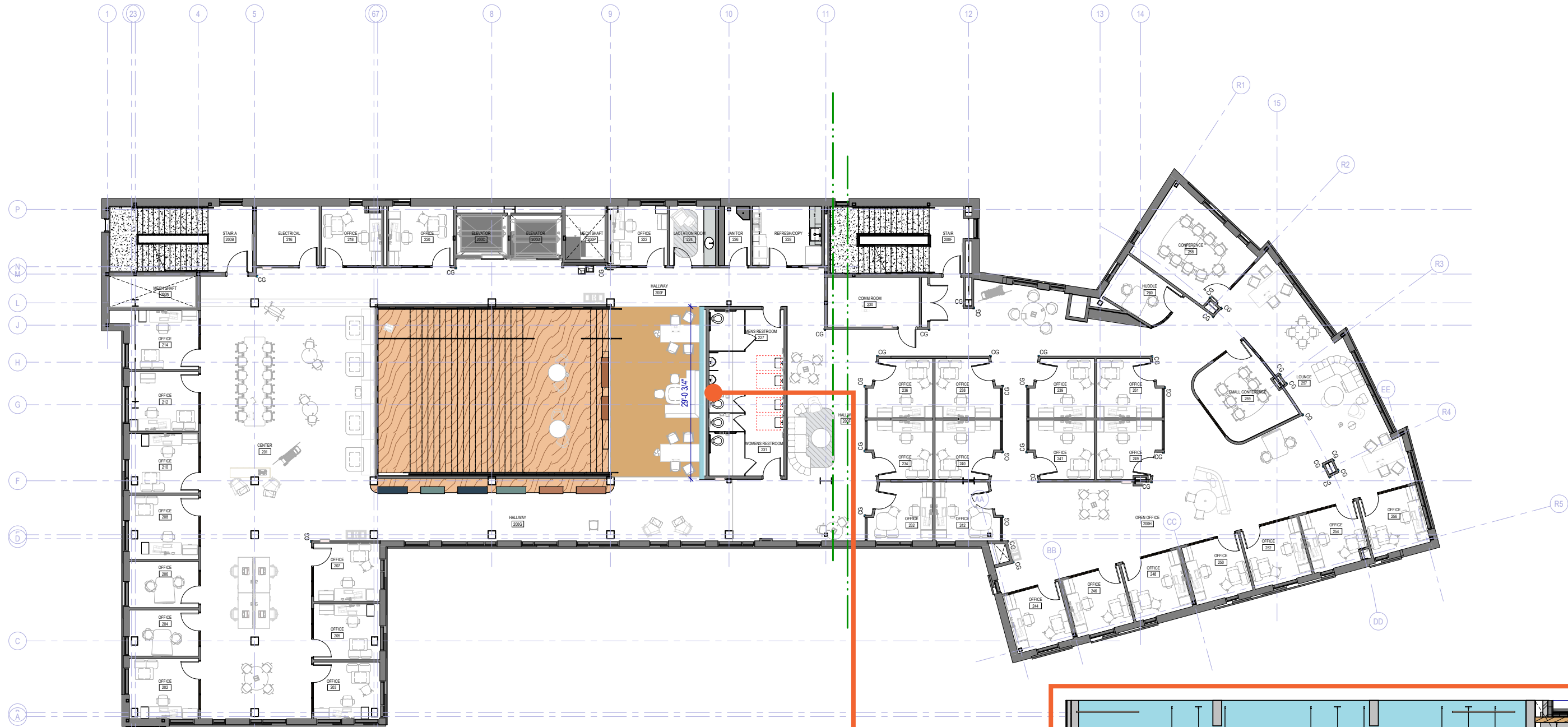
Images courtesy MHTN Architects



## CONTENTS:

- DIMENSIONED LEVEL 2 FLOOR PLAN & ELEVATION WITH DIMENSIONS
- INTERIOR VIEWS OF ART LOCATION





# Floor plans & Renderings

Level 1

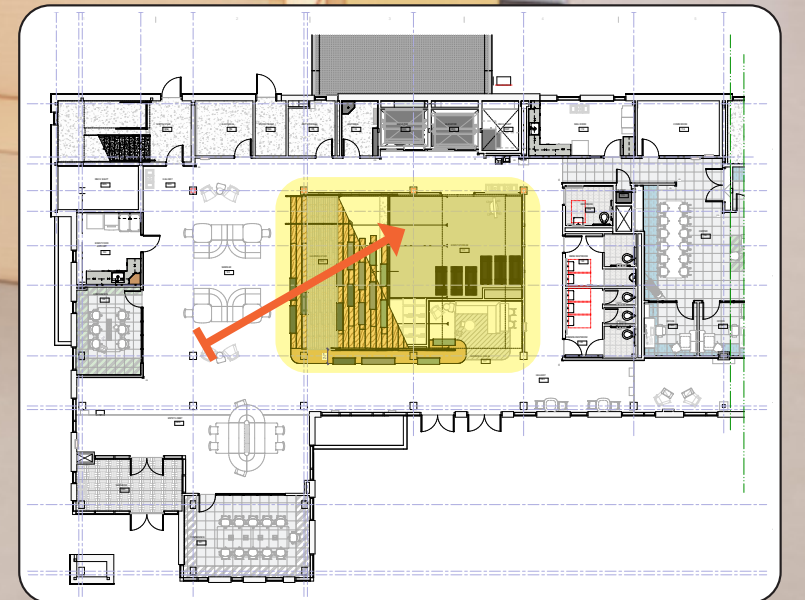
Bottom of Learning Stairs - (NW)

## Legend

Art Location 

View Marker 

\*color of wall is to call attention to art locations and not to imply actual intended wall color





# Floor plans & Renderings

Level 1

Bottom of Learning Stairs - (NE)

## Legend

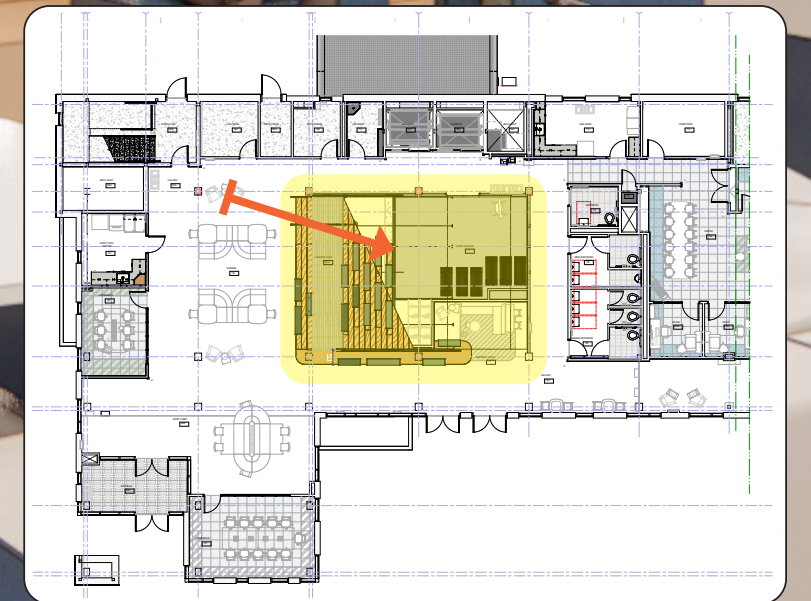
Art Location\*



View Marker



\*color of wall is to call attention to art locations and not to imply actual intended wall color



# Floor plans & Renderings

Level 2

Top of Stairs - (NW)

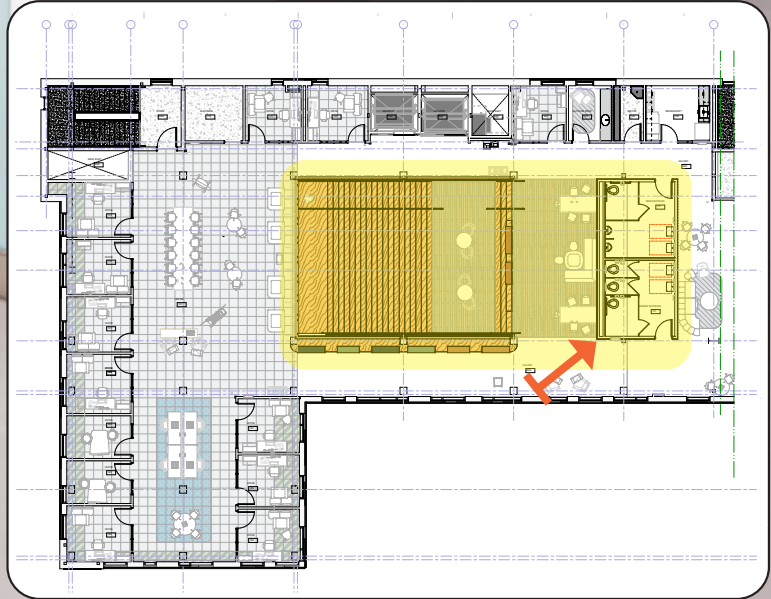
Front Right Corner View

## Legend

Art Location 

View Marker 

\*color of wall is to call attention to art locations and not to imply actual intended wall color



# Floor plans & Renderings

Level 2

Top of Stairs - (SE)

Back Right Corner View

## Legend

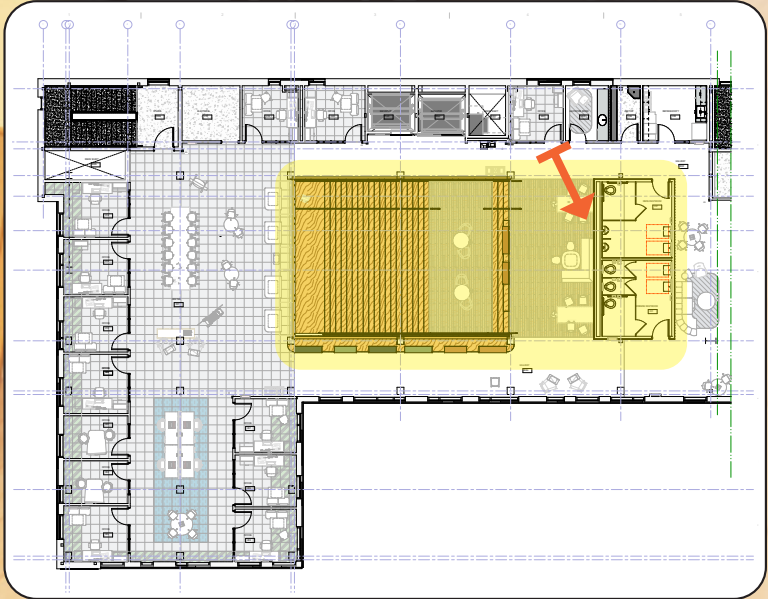
Art Location\*



View Marker



\*color of wall is to call attention to art locations and not to imply actual intended wall color



# Floor plans & Renderings

Level 2

Student Workspace

Front View from Distance

## Legend

Art Location 

View Marker 

\*color of wall is to call attention to art locations and not to imply actual intended wall color

