



Illinois Capital Development Board
Art-in-Architecture Program

Request for Qualifications

for

Spoon River College

Nursing and CTE Building

Macomb, Illinois

Project Number: 810-091-007

CALL TO ARTISTS

The Art-in-Architecture Program of the Capital Development Board is pleased to announce a Request for Qualifications (RFQ) to Illinois professional artists to create permanent original public art for the Nursing and CTE Building at Spoon River College in Macomb, Illinois.

FINAL DEADLINE Friday, August 30, 2024

3:00 P.M.

CDB.ArtinArchitecture@illinois.gov

Note: Applying before the final deadline is highly encouraged. Any portfolio submitted after the deadline will not be considered for this project.

ELIGIBILITY

These public art commissions and potential purchases are open to all professional artists, artisans, or artist-led teams *that live and work in the state of Illinois*.

- An artist/artisan is defined as a skilled practitioner that generates designs and concepts for creative works that reflect form, beauty, and aesthetic perception. All artists on a team must be from Illinois.
- Subcontractors may be used and are defined as those providing technical implementation such as construction, fabrication, and/or assembly for portions or all of a finished product under direct supervision and control of an artist.
- Faculty and staff of Spoon River College are not eligible to apply for this commission.

CONSTRUCTION PROJECT

The Spoon River College Macomb Campus will inhabit 65,000 square feet of former retail space. This dynamic and transformative renovation will feature new skylights bringing daylight deep into the building through an open ceiling. The renovation of this space is aimed at enhancing educational opportunities and regional economic development. The campus will feature state-of-the-art facilities including modern classrooms, learning laboratories for nursing programs, and hands-on learning laboratories for career and technical education programs.

The building is designed to provide a comfortable learning space that is welcoming to all students. Once completed, the new campus will serve as a vibrant hub for learning, innovation, and community activities, while fostering a supportive environment for academic and personal growth.

ARTWORK SITE

Three highly visible spaces have the opportunity for artwork, all of which are located in the heart of the building. One option is suspended from the ceiling with two options being wall-mounted. Reference [pages 8-11](#). These spacious and light filled areas are finished with white walls and brick-look accent tiles, polished concrete floors and gray carpet, and exposed white-painted steel roof structure. Classroom and office space will be visible through 8' tall glass.

The artwork must meet requirements of the Americans with Disabilities Act and the Illinois Accessibility Code.

ARTISTIC OBJECTIVES

The College has no preference for media, theme, or style. Artists are not limited to representing the function or programs of the building. The artwork must be durable, safe, and cost effective to maintain with limited annual maintenance.

SELECTION PROCESS

The Fine Arts Review Committee will review the portfolios of eligible applicants. At least three artists/teams will be selected as semi-finalists and paid a fee of \$1,000 each to develop and present a site specific proposal. After the proposal presentations, the Committee will select a winning artist/team for the commission.

Correspondence will be sent to the semi-finalists and to the winning artist/team detailing the proposal process and contracts.

BUDGET DETAILS

The budget for the project is \$26,000. This budget covers all expenses associated with, but not limited to the project design, labor, fabrication, project management, materials, tools, contracted services, operations and meetings, and travel required to complete the artwork plus installation, related permits, licenses, taxes and insurance, and transportation and delivery of the work to the site, as well as documentation of the completed project. Any expense that exceeds the contracted amount will be the artist's responsibility.

The artist is responsible for working with the Capital Development Board Art-in-Architecture Program, the using agency, and other relevant partners to oversee all aspects of the art installation.

LEGAL AGREEMENT

The Capital Development Board Art-in-Architecture Program reserves the right to alter any aspect of the selection process or overall project in any way for its own convenience at any time. This Request for Qualifications does not constitute either an expressed or implied contract and these provisions are subject to change.

HOW TO APPLY

IF YOU PREVIOUSLY APPLIED TO THE ILLINOIS ART-IN-ARCHITECTURE PROGRAM

You do not need to send your portfolio again. Email the following:

Cover Letter (letter of intent or artist statement)

- One page maximum
- Include the project in which you are applying
- Include your most current contact information (address, telephone number, and email address)

IF YOU HAVE NEVER APPLIED TO THE ILLINOIS ART-IN-ARCHITECTURE PROGRAM OR YOU WISH TO UPDATE YOUR PORTFOLIO

Email a full portfolio which includes each of the following (name each file "lastnamefirstname_documentname"):

Cover Letter (letter of intent or artist statement)

- One page maximum
- Include the project in which you are applying

Résumé (include your contact information)

- If applying as a team, provide a resume for each team member

Artwork Images (up to 15 images for individual or teams)

- One image per JPEG
- Pixel dimensions per image: approximately 600 x 800
- Image resolution: 72-300 pixels per inch
- Maximum file size per image: 1MB
- Name each image: lastnamefirstnameimagenumber.jpg, for example:
KahloFrida01.jpg, KahloFrida02.jpg, KahloFrida03.jpg, etc.

Artwork Image List (one document)

- A corresponding, numbered image list listing the artwork title, media, dimensions, date, location (if applicable), budget (if applicable), and brief description (optional)
- Do not include images within this document

Support Material (OPTIONAL)

- One page maximum
- Press clippings, volunteer work, artwork/commission spotlight, or other relevant information

Please note:

- Attach all files to the email
- JPEG files are required for artwork images
- PDF or Word files are required for all documents
- Name each document “lastnamefirstname_document”, for example:
KahloFrida_coverletter.pdf KahloFrida_imagelist.doc
- DO NOT include artwork images within the body of the email
- DO NOT send design proposals
- All submittals become property of the Capital Development Board Art-in-Architecture Program. Submissions can be made available for public viewing. The artist retains copyright.

WHERE TO SUBMIT

Email portfolio materials to **CDB.ArtinArchitecture@illinois.gov** no later than **Friday, August 30, 2024 at 3:00 P.M.** Any portfolio submitted after the deadline will not be considered for this project.

QUESTIONS

The Art-in-Architecture Procedure Manual, commission opportunities, and other information are posted at [AIA Program website](#). For questions, contact the Art-in-Architecture Program at **CDB.ArtinArchitecture@illinois.gov**.

ABOUT THE ART-IN-ARCHITECTURE PROGRAM

The Illinois Art-in-Architecture Program promotes and preserves Illinois art and enriches communities by commissioning original artwork for public buildings constructed with State funds.

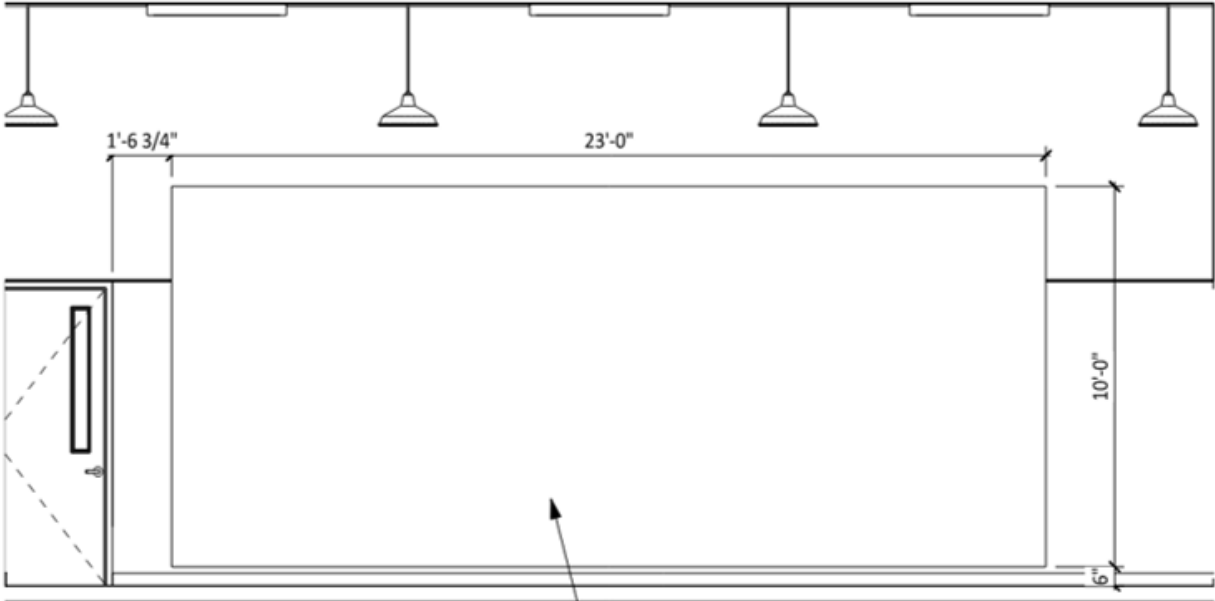
The enabling legislation for the Program requires that the Capital Development Board “shall set aside 1/2 of 1 percent of the amount authorized and appropriated for construction or reconstruction of each public building financed in whole or in part by State funds and generally accessible to and used by the public for purchase and placement of suitable works of art in such public buildings.” A committee including art professionals and the project architect, and oversees each project and selects the artwork.

Since its inception in 1977, the Art-in-Architecture Program has purchased or commissioned works of art by Illinois artists for public display throughout Illinois. For more information visit the [AIA Program website](#).



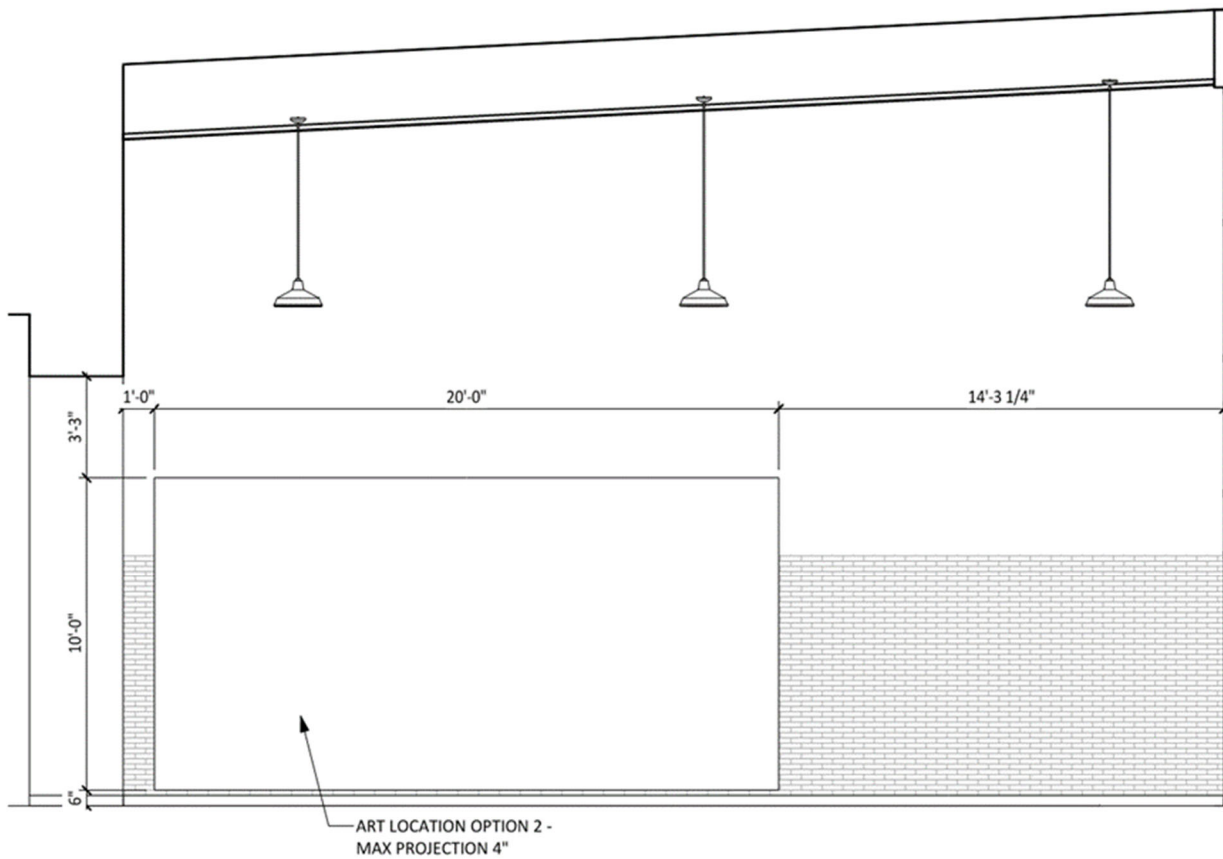
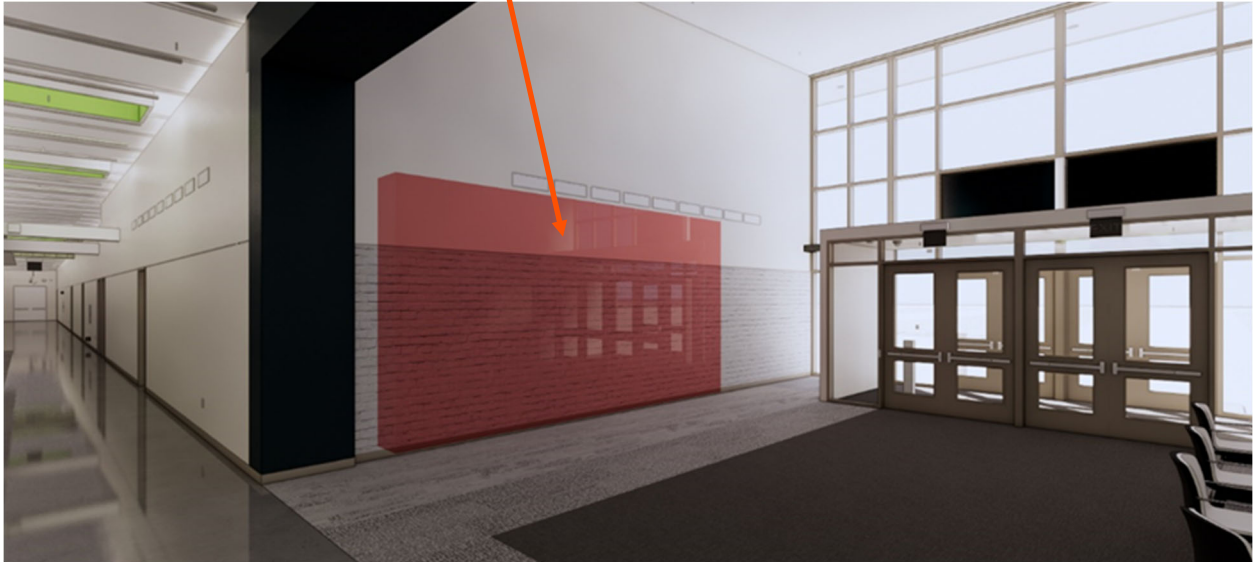


ARTWORK LOCATION OPTION 1

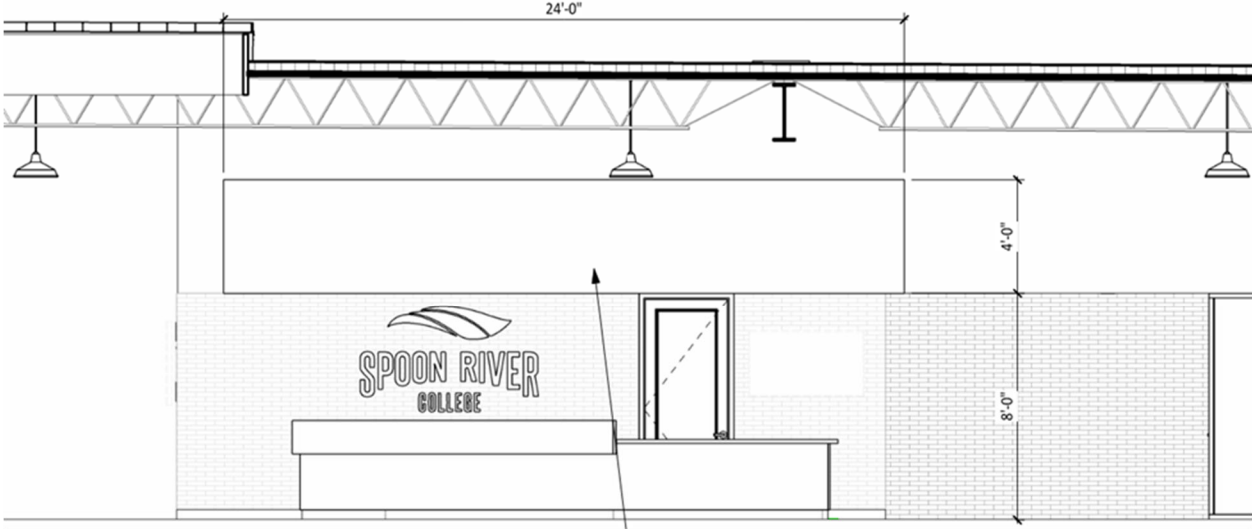


ART LOCATION OPTION 1 -
MAX PROJECTION 4"

ARTWORK LOCATION OPTION 2



ARTWORK LOCATION OPTION 3



ART LOCATION OPTION 3 -
MAX WIDTH = 4'-0"